

PHT

PHT-6m move lighting system

Model: PHT-LT-6-4000

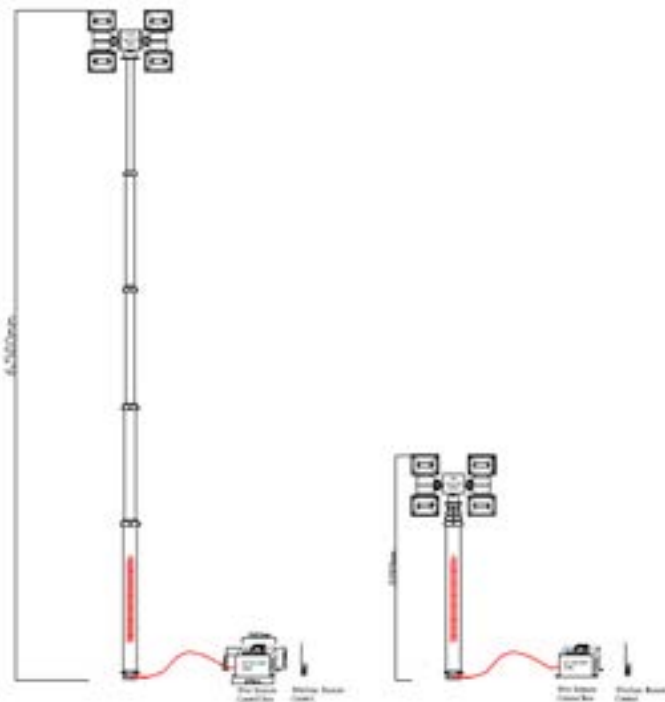


PNEUMATIC TELESCOPIC MAST



System Worked under AC 220~240V/50Hz External Power Supply

Dimensions: Total Height 6.5m, Retracted Height: 2.2m



SYSTEM INTRODUCTION

System Include 3 Parts

- 1> 6m Pneumatic Telescopic Mast
- 2> 4x 1000W Halogen Lamps System
- 3> Remote Pan &Tilt Control System

6m Pneumatic Telescopic Mast



- ① Item model: 70505060
- ② Extended Height: 6 m
- ③ Retracted Height: 1.75m
- ④ Internal Spiral Cables: 2 x 2.5mm², 4 x 1.5mm², 10 x 0.5 mm² RVV cables
- ⑤ Number of sections: 5 sections
- ⑥ Section Diameter Range: 66mm, 82mm, 98mm, 118mm, 140mm
- ⑦ Default Accessories: top flange, bottom flange
- ⑧ Materials: Aluminum Alloy 6063/T5 for tube sections, Aluminum Alloy 6061 for top flange, bottom flange
- ⑨ Mast Net Weight: 42 kg approx

4 x 1000W Halogen Lamps System



- ① Philips Brand
- ② 1000 W per lamp
- ③ 4 pieces
- ④ Individual Control by wireless remote control and wire remote control box
- ⑤ Turn & Tilt : Rotate 420 °, Tilt 420°

Remote Control System



- ① Wireless Remote Control
- ② Wire Remote Control Box

System Installation



- 1> Install the Lamps on the Pan & Tilt System
- 2> Install the Pan & Tilt System on the Mast Top
- 3> Connect the cables of Pan&Tilt to the Mast Top: Circulate Connectors



- 4> Connect the Control System to the Mast Bottom



- 5> Connect the Powers to the System



- 6> Air supply connection



- 7> Connection Finished

Operation

1. Mast Erection: Press button “ 13 ” on the wireless remote control or “UP” on the wire remote control box , then the small air compressor in the control box will be working. Press the button about 5 min, the mast will be erected fully, then stop press the button. *(the compressor last working time 12 to 15 mins, please do not exceed this time for operation)*
2. Mast Retraction: Press Button “ 14 ” on the wireless remote control or “Down” on the wire remote control box
3. Lamps Control:
 - 1> **A lamp:**
Light On: Press Button “ 1 ” on the wireless remote control or “ I /ON ” on the wire remote control box
Light Off: Press Button “ 4 ” on the wireless remote control or “ I /OFF ” on the wire remote control box
 - 2> **B lamp:**
Light On: Press Button “2 ” on the wireless remote control or “ II /ON ” on the wire remote control box
Light Off: Press Button “ 5 ” on the wireless remote control or “ II /OFF ” on the wire remote control box
 - 3> **C lamp:**
Light On: Press Button “ 3 ” on the wireless remote control or “ III /ON ” on the wire remote control box
Light Off: Press Button “ 6 ” on the wireless remote control or “ III /OFF ” on the wire remote control box
 - 4> **D lamp:**
Light On: Press Button “7 ” on the wireless remote control or “IV /ON ” on the wire remote control box
Light Off: Press Button “ 10 ” on the wireless remote control or “IV /OFF ” on the wire remote control box
- 4 . Turn & Tilt Control:
 - 1> **Turn in Horizontal Level: 420°**
“ + Turn ” : Press Button “ 8 ” on the wireless remote control or “+ TURN ” on the wire remote control box
“ - Turn ” : Press Button “ 9 ” on the wireless remote control or “- Turn ” on the wire remote control box
 - 2> **Tilt in Vertical: 420°**
“ + Tilt ” : Press Button “ 11 ” on the wireless remote control or “+ Tilt ” on the wire remote control box
“ - Tilt ” : Press Button “ 12 ” on the wireless remote control or “- Tilt ” on the wire remote control box

Pictures Reference



Mast Erection by wireless remote control



(Lamps Individual Control by Wireless Remote)



(Turn & Tilt Control by Wireless Remote)



(Control Box Control)